

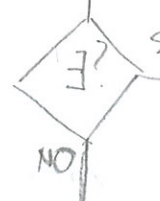
SCALLIN = Select from where ATFLW = PT

leggi XAFILIN da SCALLIN

chain su AFLIND (des+lin)



chain su AFLINT (key+lin)

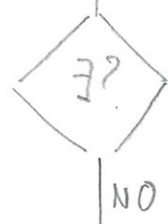


PROPONI AGGIUNTA

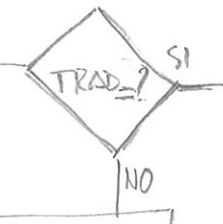
PROPONI MODIFICA

quale lin e? + di una

chain su AFLIND (des)



chain su AFLINT (key+lin)



PROPONGO AGGIUNTA FRASE + TRAD

PROP. AGG x2

PROP. MOD x2

FINE

